

FULL CASTING SPRINKLER OUTLET



DESCRIPTION

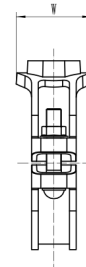
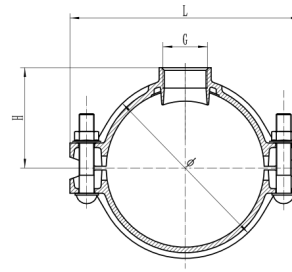
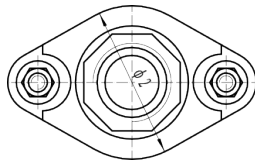
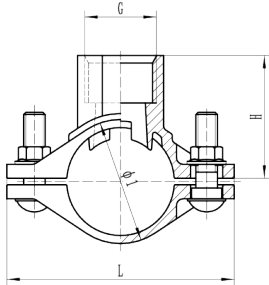
Sprinkler outlets are designed for direct connection of sprinkler heads. This design is easy-to-install thanks to its pipe-shaped casting collar and outlet shape.

Sizes available: 1¼ x ½" - 2½ x 1"
Working pressure: 300 PSI / 2068 Kpa

MATERIAL SPECIFICATIONS

- Housing:**
Ductile iron conform to ASTM A536
- Coating:**
 - Galvanized
 - Red paint coating: RAL 3000
- Rubber gasket:**
EPDM gaskets dispose of the international certifications and have undergone the aging test at 110°C (230°F) during a period of 45 days (1080 hours) and the frozen test at -40°C (-40°F) during a period of 4 days (96 hours).
Working temperature gaskets: -34°C to 110°C (-29°F to 230°F).
- Bolts and Nuts:**
Medium carbon steel, threaded BSPT, zinc electroplated, quenched and tempered.

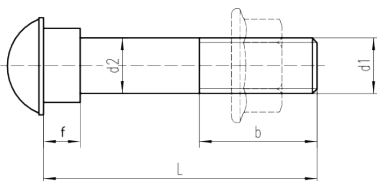
DIMENSIONS



Reference		Size	O.D.	DN	Nominal Dimensions					Hole Cut	Bolt size	Nuts	Socket wrench	Bolt Torque	Weight
Red	Galva	Inch	mm	mm	L mm	H mm	G mm	Ø1 mm	Ø2 mm	mm	(d1 x L)	mm	mm	N*M	Kg
GSTFCR	GSTFCG	1¼ - ½	42,4 x 21,6	32-15	98	45	65	52	65	30+1	M10*40	21,8	15	60-70	0,38
GSTFCR	GSTFCG	1¼ - ¾	42,4 x 26,9	32-20	98	45	65	52	65	30+1	M10*40	21,8	15	60-70	0,40
GSTFCR	GSTFCG	1¼ - 1	42,4 x 33,7	32-25	98	54	65	52	65	30+1	M10*40	21,8	15	60-70	0,48
GSTFCR	GSTFCG	1½ - ½	48,3 x 21,6	40-15	105,6	48	65	57,5	65	30+1	M10*40	21,8	15	60-70	0,41
GSTFCR	GSTFCG	1½ - ¾	48,3 x 26,9	40-20	105,6	48	65	57,5	65	30+1	M10*40	21,8	15	60-70	0,43
GSTFCR	GSTFCG	1½ - 1	48,3 x 33,7	40-25	105,6	57	65	57,5	65	30+1	M10*40	21,8	15	60-70	0,48

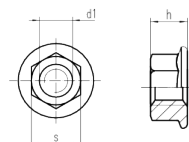
Reference		Size	O.D.	DN	Nominal Dimensions					Hole Cut	Bolt size	Nuts	Socket wrench	Bolt Torque	Weight
Red	Galva	Inch	mm	mm	L mm	H mm	G mm	Ø1 mm	Ø2 (W) mm	mm	(d1 x L)	mm	mm	N*M	Kg
GSTFCR	GSTFCG	2½ - ½	76,1 x 21,6	65-15	139	61	56	93	56	30+1	M10*60	21,8	15	60-70	0,74
GSTFCR	GSTFCG	2½ - ¾	76,1 x 26,9	65-20	139	62	56	93	56	30+1	M10*60	21,8	15	60-70	0,75
GSTFCR	GSTFCG	2½ - 1	76,1 x 33,7	65-25	139	60	56	93	56	38+1	M10*60	21,8	15	60-70	0,87

BOLTS AND NUTS



	DN 32-40	DN 50
d1	M10	M10
d2	9	9
b	32	38
f	5	5
L	55	60

d1	M10
h	10
s	15



- General notes:
- Pressure ratings listed are CWP (cold working pressure) or maximum working pressure within the service temperature range of the gasket used in the coupling. This rating may occasionally differ from maximum working pressure listed and/or approved by UL and/or FM, as testing conditions and test pipes differ. For more information, please contact info@profitings.eu.
 - Maximum working pressure and end loads listed are total of internal and external pressures and loads, based on standard weight (ANSI) steel pipe and standard roll or cut groove, in accordance with Profit specifications. For more information, please contact info@profitings.eu.
 - For one time field test only, the maximum joint working pressure may be increased one and a half times the figure shown.
 - Warning:** Piping systems must always be depressurized and drained before attempting disassembly and/or removal of any components.
 - Profit reserves the right to change specifications, designs and/or standard equipment without notice and without incurring in any obligations.