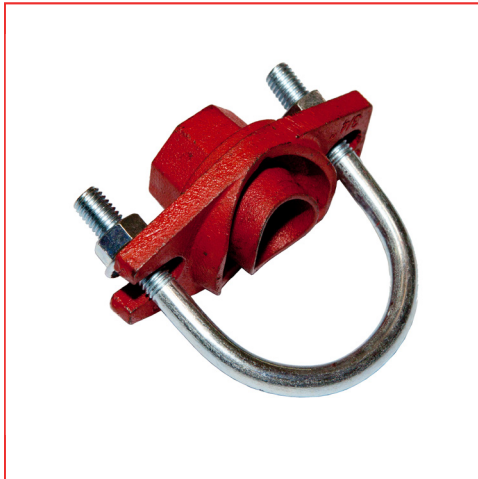


U-BOLT SPRINKLER OUTLET



DESCRIPTION

Sprinkler outlets are designed for direct connection of sprinkler heads.

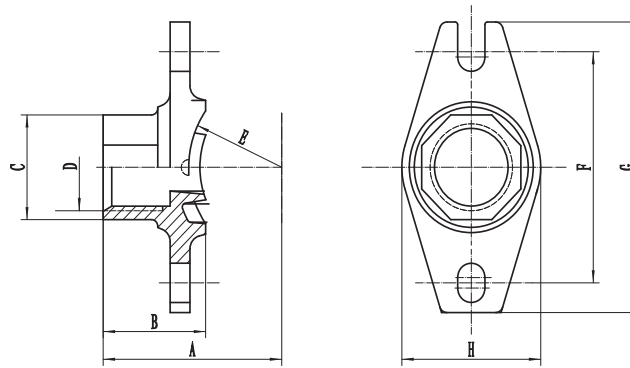
Sizes available: 1 x 1/2" - 2 x 1"

Working pressure: 300 PSI / 2068 Kpa

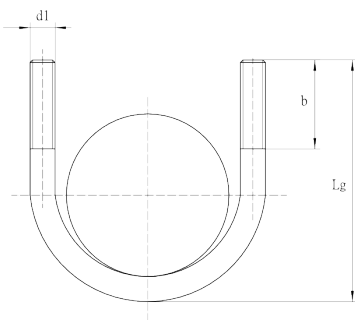
MATERIAL SPECIFICATIONS

- Housing:**
Ductile iron conform to ASTM A536
- Coating:**
 - Galvanized
 - Red paint coating: RAL 3000
- Rubber gasket:**
EPDM gaskets dispose of the international certifications and have undergone the aging test at 110°C (230°F) during a period of 45 days (1080 hours) and the frozen test at -40°C (-40°F) during a period of 4 days (96 hours).
Working temperature gaskets: -34°C to 110°C (-29°F to 230°F).
- U-Bolt and Nuts:**
Medium carbon steel, threaded BSPT, zinc electroplated, quenched and tempered.

DIMENSIONS

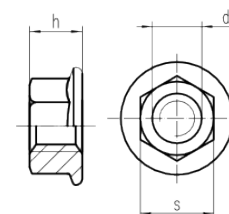


Reference		Size	O.D.	Nominal DN	Nominal Dimensions								Hole Cut	Bolt size	Nuts	Socket wrench	Bolt Torque	Weight
Red	Galva	Inch	mm	mm	A mm	B mm	C mm	D inch	E mm	F mm	G mm	H mm	mm	(d1 x Lg)	mm	mm	N*M	Kg
GSTR	GSTG	1 - 1/2	33,7 x 21,3	25 - 15	53	40	29	1/2	17,7	60	89	56	25+1	M8*44	16,9	13	20-30	0,33
GSTR	GSTG	1 1/4 - 1/2	42,4 x 21,3	32 - 15	50	46	28	1/2	22,2	76	89	56	30+1	M10*78	21,8	15	60-70	0,42
GSTR	GSTG	1 1/4 - 3/4	42,4 x 26,9	32 - 20	53	49	33	3/4	22,2	76	89	56	30+1	M10*78	21,8	15	60-70	0,46
GSTR	GSTG	1 1/4 - 1	42,4 x 33,7	32 - 25	58	54	40	1	22,3	76	89	56	30+1	M10*78	21,8	15	60-70	0,49
GSTR	GSTG	1 1/2 - 1/2	48,3 x 21,3	40 - 15	49	39	28	1/2	25,15	76	89	56	30+1	M10*78	21,8	15	60-70	0,38
GSTR	GSTG	1 1/2 - 3/4	48,3 x 26,9	40 - 20	52	42	33	3/4	25,16	76	89	56	30+1	M10*78	21,8	15	60-70	0,38
GSTR	GSTG	1 1/2 - 1	48,3 x 33,7	40 - 25	55	45	40	1	25,16	76	89	56	30+1	M10*78	21,8	15	60-70	0,41
GSTR	GSTG	2 - 1/2	60,3 x 21,3	50 - 15	58	36,6	28	1/2	31,2	78	98	56	30+1	M10*92	21,8	15	60-70	0,45
GSTR	GSTG	2 - 3/4	60,3 x 26,9	50 - 20	61	39,6	33	3/4	31,2	78	98	56	30+1	M10*92	21,8	15	60-70	0,45
GSTR	GSTG	2 - 1	60,3 x 33,7	50 - 25	66	44,6	40	1	31,2	78	98	56	30+1	M10*92	21,8	15	60-70	0,47



U-BOLT AND NUTS

	DN 25	DN 32-40	DN 50
d1	M8	M10	M10
b	22	32	38
Lg	48	78	93



	M8	M10
d1	8	10
h	13	15

- General notes:
- Pressure ratings listed are CWP (cold working pressure) or maximum working pressure within the service temperature range of the gasket used in the coupling. This rating may occasionally differ from maximum working pressure listed and/or approved by UL and/or FM, as testing conditions and test pipes differ. For more information, please contact info@profitings.eu.
 - Maximum working pressure and end loads listed are total of internal and external pressures and loads, based on standard weight (ANSI) steel pipe and standard roll or cut groove, in accordance with Profit specifications. For more information, please contact info@profitings.eu.
 - For one time field test only, the maximum joint working pressure may be increased one and a half times the figure shown.
 - Warning:** Piping systems must always be depressurized and drained before attempting disassembly and/or removal of any components.
 - Profit reserves the right to change specifications, designs and/or standard equipment without notice and without incurring in any obligations.